

HyperTerminal Connection with T19/T26

INTRODUCTION

This instruction explains how to setup your HyperTerminal program for the connection with the T19/T26 MX800 option.

HyperTerminal is communications software developed by Hilgraeve and is included in all versions of Microsoft Windows.

STARTING HYPERTERMINAL PROGRAM

Start the HyperTerminal program:

1. Click on START
2. Click on PROGRAMS
3. Click on ACCESSORIES
4. Click on COMMUNICATIONS
5. Click on HYPERTERMINAL

If you are unable to locate HyperTerminal on your PC please see the next section on HOW TO INSTALL HYPERTERMINAL

HOW TO INSTALL HYPERTERMINAL

1. Click on Control panel
2. Click on My Computer
3. Click on Install/Remove Programs
4. Click on Windows settings
5. Click on Communications
6. Select Hyper terminal and click apply or OK at the bottom.
7. You will be prompted for your Windows CDROM.

HYPERTERMINAL PROGRAM SETUP

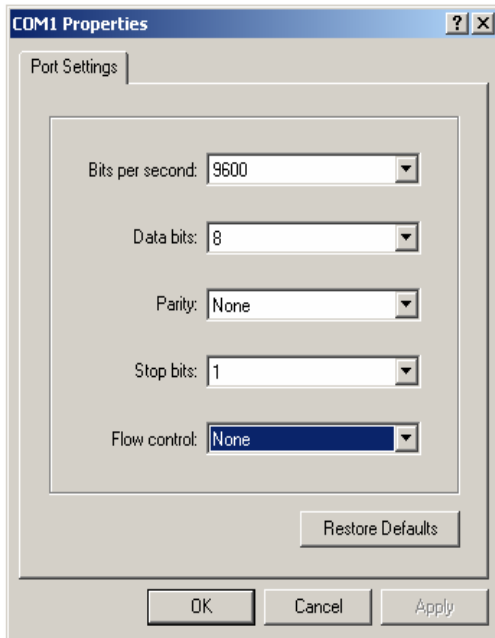
1. After starting HyperTerminal for the first time it will ask you to create a connection.



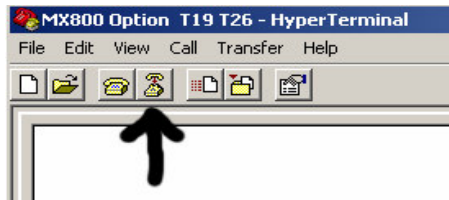
2. Name the connection with a suitable relevant name. Then Click OK.
3. Next you need to select the Comm.'s Port for which you will be using. Then click OK.



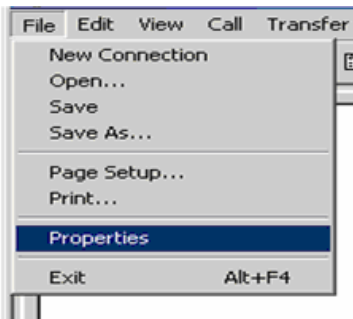
- Set the Port settings as show in Picture below.



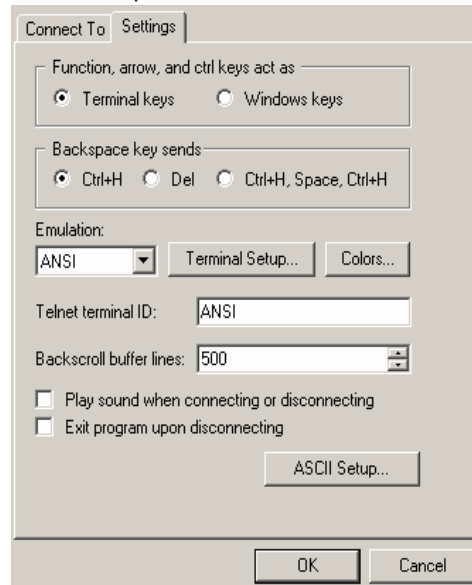
- Click OK.
- You have now created your connection. Though we now need to set the terminal emulation up.
- Click on the disconnect icon. In the main Terminal window.



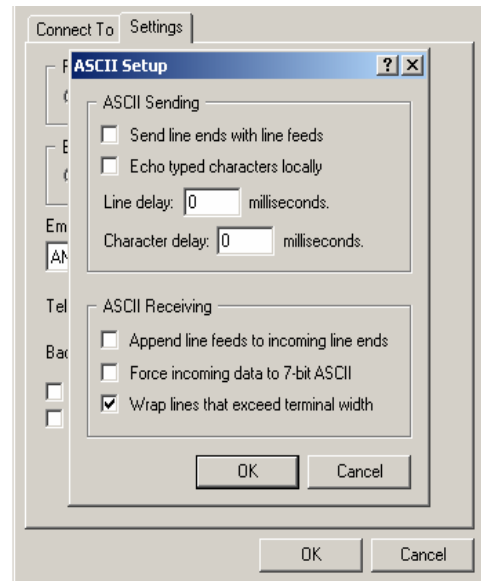
- On the File menu, select properties.



- Click the setting tab. Setup the Setting as shown in picture below.



- Now we need to setup the ASCII setup. Click the ASCII Setup icon.
- Setup the following settings as show in picture below.



- Click OK
- On the File menu, select save as to save the connection setup for future connection.
- You are now ready to program you T19/T26 option board. Please see MX800 Technical manual on for information on how to program /setup T19/T26 option board.