

MX920 HYPERTERMINAL SETUP

INTRODUCTION

This instruction explains how to setup your HyperTerminal program for the connection of the MX920 option to your PC.

WHAT IS HYPERTERMINAL

HyperTerminal is communications software developed by Hilgraeve and is included in all versions of Microsoft Windows.

STARTING HYPERTERMINAL PROGRAM

Start the HyperTerminal program:

1. Click on **START**
2. Click on **PROGRAMS**
3. Click on **ACCESSORIES**
4. Click on **COMMUNICATIONS**
5. Click on **HYPERTERMINAL**

HOW TO INSTALL HYPERTERMINAL

1. Click on **Control panel**
2. Click on **My Computer**
3. Click on **Install/Remove Programs**
4. Click on **Windows settings**
5. Click on **Communications**
6. Select **Hyper terminal** and click **apply** or **OK** at the bottom.
7. You will be prompted for your Windows CDROM.

SETUP OF HYPERTERMINAL PROGRAM

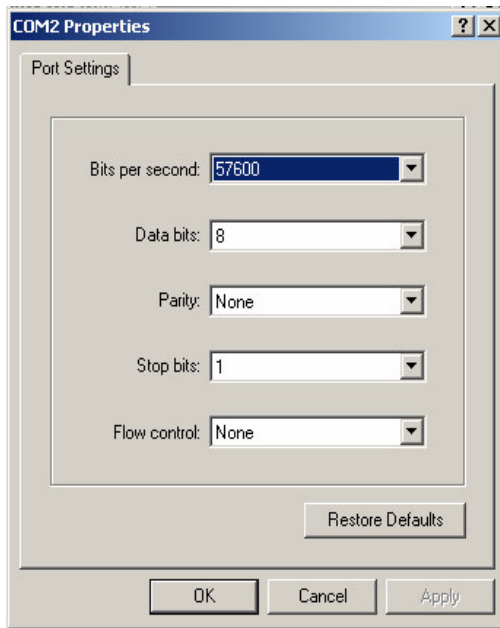
1. After starting HyperTerminal for the first time it will ask you to create a connection.



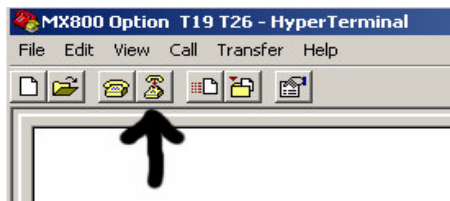
2. Name the connection with a suitable relevant name. Then Click **OK**.
3. Next you need to select the **Comm.'s Port** for which you will be using. Then click **OK**.



4. Set the Port settings as show in Picture below.

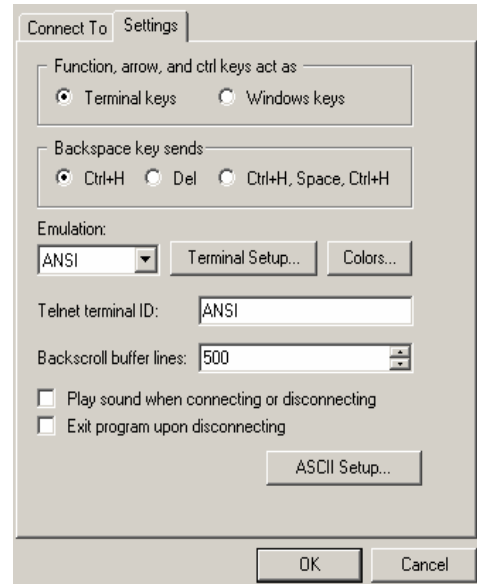


5. Click OK.
6. You have now created your connection. Though we now need to set the terminal emulation up.
7. Click on the disconnect icon. In the main Terminal window.

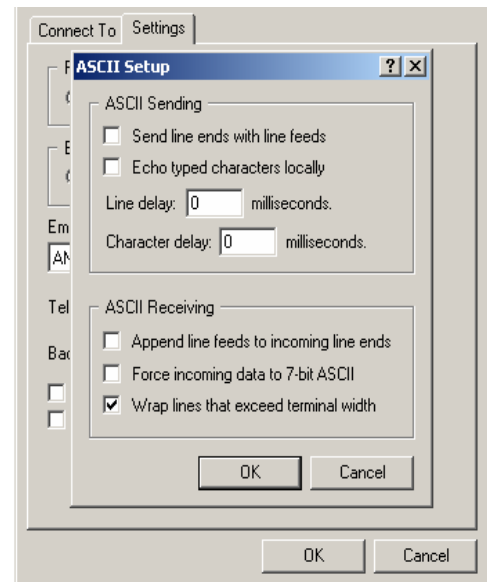


8. On the File menu, select properties.
9. Click the setting tab.

10. Set up setting as shown in picture below.



11. Now we need to setup the ASCII setup. Click the ASCII Setup icon.
12. Setup the following settings as show in picture below.



13. Click OK and we are finished setting up.