

MX92x Channel Programming

INTRODUCTION

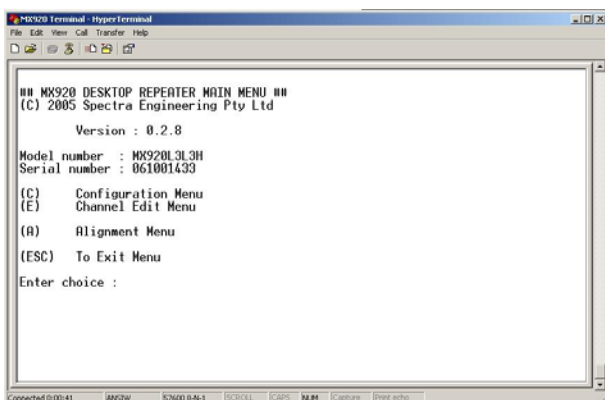
The MX92X Desktop Repeater comes with its own internal menu system accessed with any general terminal package. The menu system allows the user to change several configuration settings to suit the environment in which the MX920 must operate. The menu system is invoked by connecting the MX92X to any terminal program, setting the baud rate for that terminal to 57600, 8, N, 1, no handshaking, and typing 'RMENU'. When the menu system is invoked the terminal screen should appear as shown below. The user can select various options from the menu, such as changing the channel information of the MX92X. The changes made to the operation of the desktop repeater are stored in non-volatile memory to maintain the latest configuration even with loss of power.

PROGRAMMING MX92X

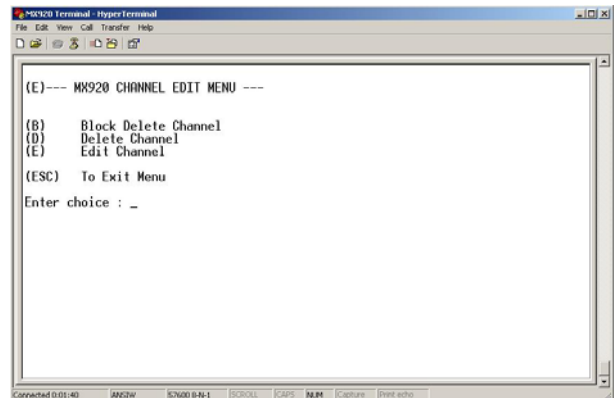
Connect the MX92x radio to PC via COMs Port. Start a terminal PC such as HyperTerminal program. (See HyperTerminal Application note for further information if required.)

Procedure:

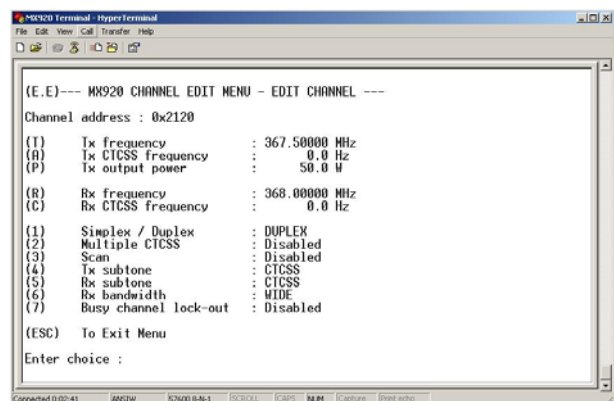
1. Enter the Built in Menu system via the command RMENU <enter>.



2. Select Channel Edit Menu (E).



3. Edit the channel you wish to contain the frequencies. E.g. Edit channel 1. (E) 1



You are now in the channel edit screen. Now the radio can be programmed for in band frequency.

Enter your frequencies by selecting the corresponding menu letter. For example, the RX frequency, select (R) then type in the wanted frequency. Exit the menu system once completed. Repeat the process if more than one channel is required.